



**India Meteorological Department  
(Ministry of Earth Sciences)**

**BULLETIN NO.41: (ARB/01/2021)**

**TIME OF ISSUE: 1945 HOURS IST**

**DATED: 19.05.2021**

**FROM: INDIA METEOROLOGICAL DEPARTMENT (FAX NO. 24643965/24699216/24623220)**

**TO: CONTROL ROOM, NDM, MINISTRY OF HOME AFFAIRS (FAX.NO. 23092398/23093750)**

**CONTROL ROOM NDMA (FAX.NO. 26701729)**

**CABINET SECRETARIAT (FAX.NO.23012284, 23018638)**

**PS TO HON'BLE MINISTER FOR S & T AND EARTH SCIENCES (FAX NO.23316745)**

**SECRETARY, MOES (FAX NO. 24629777)**

**H.Q. (INTEGRATED DEFENCE STAFF AND CDS) (FAX NO. 23005137/23005147)**

**DIRECTOR GENERAL, DOORDARSHAN (23385843)**

**DIRECTOR GENERAL, AIR (23421101, 23421105, 23421219)**

**PIB MOES (FAX NO. 23389042)**

**UNI (FAX NO. 23355841)**

**D.G. NATIONAL DISASTER RESPONSE FORCE (NDRF) (FAX NO. 26105912, 2436 3260)**

**DIRECTOR, PUNCTUALITY, INDIAN RAILWAYS (FAX NO. 23388503)**

**CHIEF SECRETARY, GUJARAT (FAX NO. 079-23250305)**

**CHIEF SECRETARY, DAMAN & DIU (FAX NO. 0260-2230775)**

**CHIEF SECRETARY, DADRA & NAGAR HAVELI (FAX NO. 0260-2645466)**

**CHIEF SECRETARY, RAJASTHAN (FAX NO. 0141-2227114)**

**Subject: Depression (remnant of the Extremely Severe Cyclonic Storm "Tauktae" ) weakened into a Well Marked Low over east Rajasthan and adjoining west Madhya Pradesh**

The **Depression** (remnant of the Extremely Severe Cyclonic Storm "Tauktae") over **east Rajasthan and neighbourhood** moved northeastwards, weakened into a Well marked low pressure area and lay centred at 1730 hours IST of today, the 19<sup>th</sup> May, 2021 over **east Rajasthan and adjoining west Madhya Pradesh**. It is very likely to move northeastwards and weaken gradually into a Low pressure area during next 24 hours. The remnant of the system is very likely to move further northeastwards to Uttar Pradesh during the next 36 hours.

**Warnings:**

**(i) Rainfall:**

- Light to moderate rainfall at most places with heavy to very heavy falls at isolated places very likely over East Rajasthan on 19<sup>th</sup> May.
- The interaction of the remnant low pressure system with a trough in westerlies associated with a Western Disturbance is very likely to cause light to moderate rainfall at most places with heavy to very heavy falls and extremely heavy falls at isolated places over Uttarakhand, heavy rainfall at isolated places over Himachal Pradesh, Haryana, Uttar Pradesh, north Madhya Pradesh and West Rajasthan during next 24 hours.

**(ii) Wind warning**

- Squally wind speed reaching 30-40 kmph gusting to 50 kmph is likely to prevail over East Rajasthan and adjoining west Madhya Pradesh during next 06 hours.

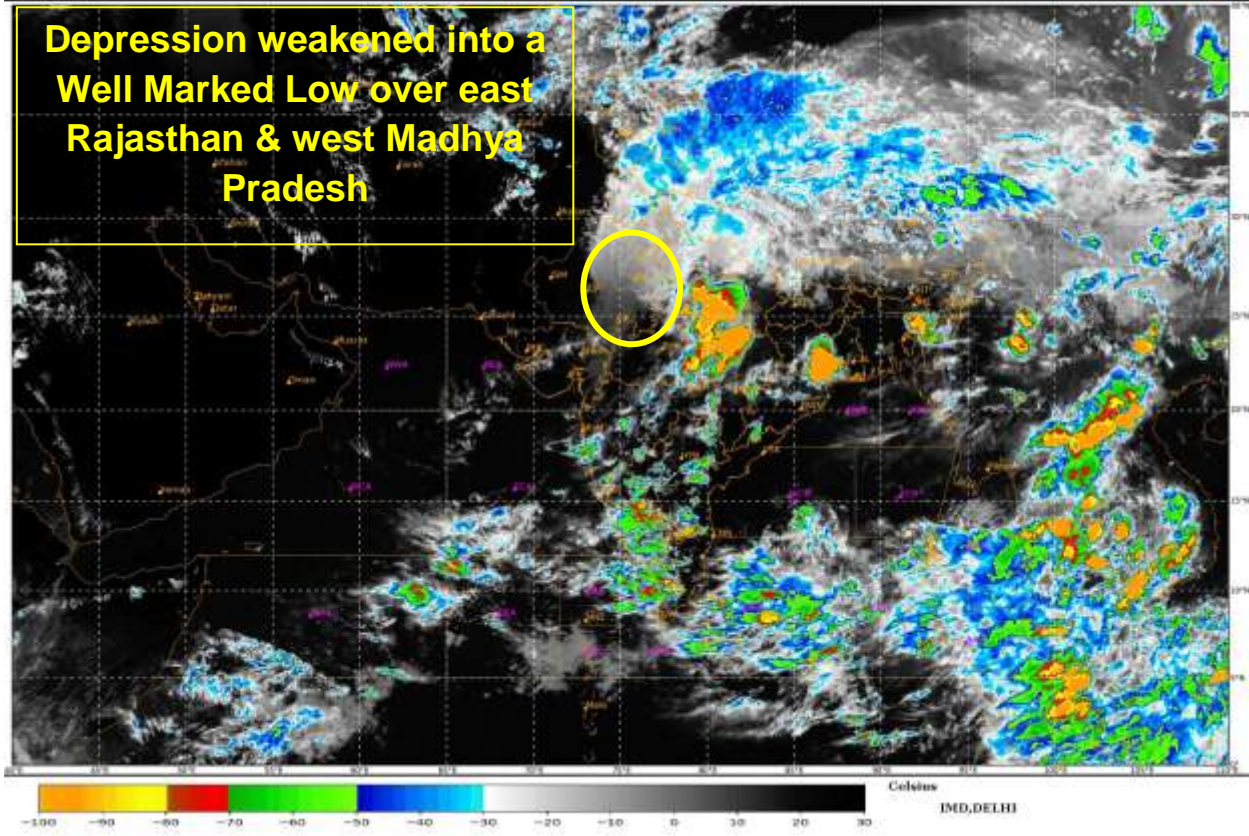
**This is the last bulletin pertaining to this system. However, regular weather warning bulletins will continue from National Weather Forecasting Centre and all regional & state level forecasting centres of IMD.**

**(Sunitha Devi. S)  
Scientist-F, RSMC, New Delhi**

Copy to: MC Jaipur /ACWC Mumbai /CWC Ahmedabad.

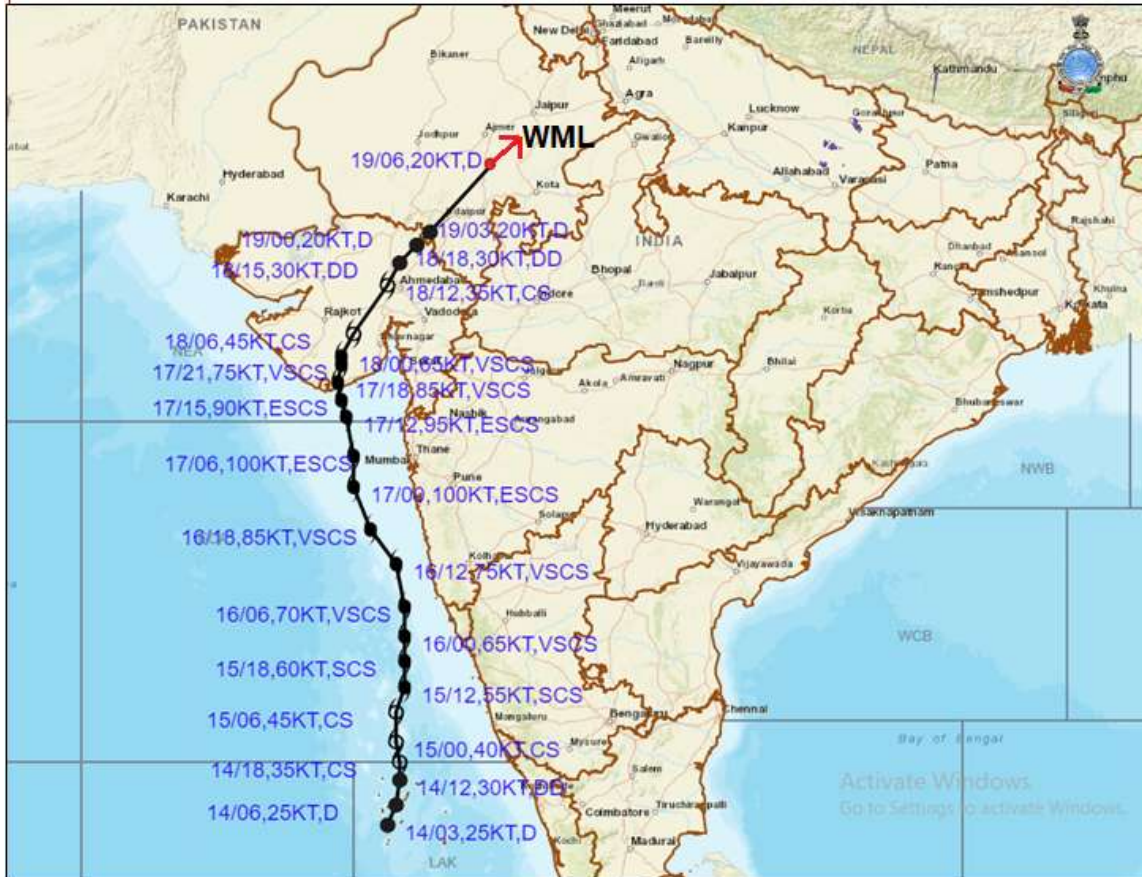


**Depression weakened into a Well Marked Low over east Rajasthan & west Madhya Pradesh**





# OBSERVED TRACK OF EXTREMELY SEVERE CYCLONIC STORM "TAUKTAE" OVER ARABIAN SEA DURING 14-19<sup>TH</sup> MAY, 2021



DATE/TIME IN UTC

IST=UTC + 0530

L: LOW PRESSURE AREA

WML: WELL MARKED LOW PRESSURE AREA

D: DEPRESSION (17-27 KT)

DD: DEEP DEPRESSION (28-33 KT)

CS: CYCLONIC STORM (34-47 KT)

SCS: SEVERE CYCLONIC STORM (48-63KT)

VSCS: VERY SEVERE CYCLONIC STORM (64-89 KT)

ESCS: EXTREMELY SEVERE CYCLONIC STORM (90-119 KT)

SuCS: SUPER CYCLONIC STORM ( $\geq$  120 KT)

● LESS THAN 34 KT

○ 34-47 KT

⊖  $\geq$  48 KT

— OBSERVED TRACK

— FORECAST TRACK

▲ CONE OF UNCERTAINTY